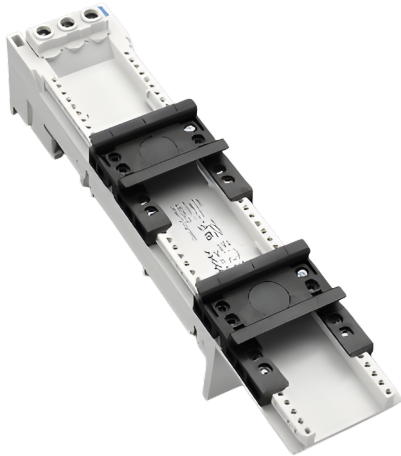


busbar adapter 80 A (32465)



The picture may show a similar product.

Description

Part No.: **32465 000**

EQUES® 60Classic

busbar adapter 80 A

3-pole

2 adjustable mounting rails

54 x 260, without leads, with terminals 1.5 - 16 mm², front operated
for busbars 12, 15, 20, 25, 30 x 5, 10 and section busbars

System

60Classic

Advantages of the product

Free phase selection.

Click mechanism when pushing onto the busbar.

Product group 05

Subgroup 27

pack size 4
EAN 4021267324650

ETIM 5.0 EC001531
ETIM 8.0 EC001531
ETIM 10.0 EC001531

Approvals

Standards

IEC 61439-1:2020

Approvals

DNV GL



CCC approval: no certification required

Technical data

Details IEC

Standards

IEC 61439-1:2020

Electrical data IEC

rated current (IEC): 80 A
rated voltage (IEC) AC: 690 V

rated isolation voltage U_i AC: 800 V
rated surge voltage U_{imp} : 6 kV

power dissipation of the article:

The power dissipation at a typical load of 80 % results to 6.0 W.
(The power dissipation at full load would be 9.3 W.)

Supplementary data IEC

The following values have been verified with tests under certain conditions. Please ask Wöhner for this conditions before designing your panel.

max. permitted voltage (IEC) DC: 800 V

min. permitted operation temperature -40°C

Mechanical data

W x H x D: 54 x 260 x 63

weight: 41.2 kg/100

poles: 3-pole

for busbars: 12, 15, 20, 25, 30 x 5, 10 and section busbars

Terminal points

cage clamp connection

screw drive: PZ2

wire stripping: 11 mm

min. cross-section: 1.5 mm²

max. cross-section: 16 mm²

Md min.: 2.4 Nm

Md max.: 3.6 Nm

Material properties

halogen-free: No

Application notes

There must be a clearance of at least 12 mm above the article to remove it from the busbar system. For compact mounting of complete motor circuits with commercially available switchgear and safe mechanical and electrical connection to the busbar system.

the short-circuit capacity of the combination of adapter and motor starter depends on the motor starter

Accessories

accessories for mounting



32969 000

mounting rail end stop
for adjustable mounting rails

connection accessories



32915 000

double-lead 2x AWG 10 (2x 6 mm²), 130 / 280 mm long
for adapters with cage clamps



32900 000A

lead AWG 6 (16 mm²), 210 mm long
for adapters with cage clamps



32907 000

lead AWG 10 (6 mm²), 130 mm long
for adapters with cage clamps



32916 000A

lead AWG 10 (6 mm²), 280 mm long
for adapters with cage clamps



32921 000

lead AWG 14 (2.5 mm²), 105 mm long
for adapters with cage clamps

**32929 000A**

lead AWG 12 (4 mm²), 190 mm long
for adapters with cage clamps

**32935 000A**

lead AWG 10 (6 mm²), 190 mm long
for adapters with cage clamps

**32918 000A**

lead AWG 14 (2.5 mm²), 190 mm long
for adapters with cage clamps

**32914 000**

lead AWG 4 (25 mm²), 210 mm long
for adapters with cage clamps

further accessories

**32948 000**

mounting rail 54 mm
for busbar adapters

**32963 000**

side-mounted module for busbar adapters
attachable to both sides
9 x 200
for: EEC60..



32953 000A

positioning piece for Siemens S2
for 45mm wide adapters with adjustable mounting rails

<https://pim.woehner.de/EN/EN/1000043069>